

# Duo Security

A password entry is a single form of security to authenticate. However, even unique and complex passwords can be compromised. Therefore, it's vital that multiple factors are required by the authentication process.

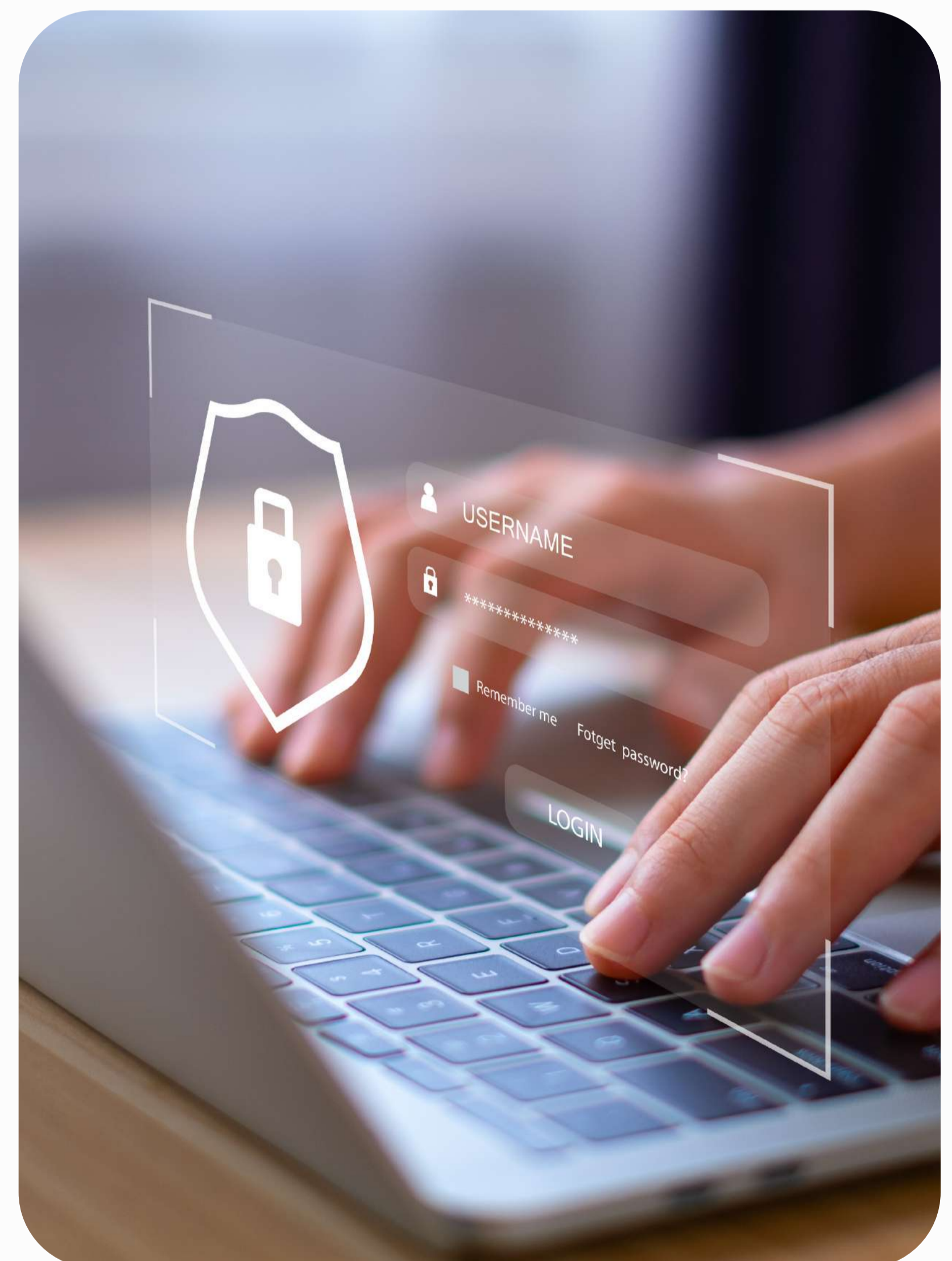
Duo Multi-Factor Authentication (MFA) is a security product owned by Cisco. It is designed to enhance the security of user accounts and protect against unauthorized access by requiring additional authentication factors.

Duo uses a variety of authentication methods, including push notifications, SMS messages, phone calls, and hardware tokens, to verify the identity of users attempting to log in.



## Some of the key features include:

- Easy deployment – we can integrate with systems and applications and deploy across a wide range of platforms and devices.
- User-friendly experience - Duo Security MFA provides a simple and intuitive user interface, making it easy for users to authenticate their identity.
- Policy-based controls - the software allows us to set policies and controls around user authentication, enforcing stronger security measures when an agency needs them.
- Detailed reporting and analytics on user authentication, helping us to detect any suspicious activity.



## Overall

Duo improves security posture by adding an additional layer of authentication beyond just a password, helping to protect against unauthorized access and data breaches.